



CO2 NEUTRAL PRODUCTION



STEWARDSHIP

Core value

We take pride in taking good care of the company,
each other, and our world. Today and all days ahead.
We always take people and planet into consideration.
Continuity and a clear focus on the future are
fundamental to our organization.

CO₂- NEUTRAL

We produce our machines in an energy and CO₂-neutral production environment* in Sliedrecht.

Our solar panels supply us with renewable energy equivalent to 224 Dutch households and have a higher output than our own annual consumption.

Renewable Energy

*based on a scope 1 & 2 CO₂ assessment and with a scope1 & 2 CO₂ compensation





ENERGY EFFICIENT

Our production facility and offices
in Sliedrecht have been built with:

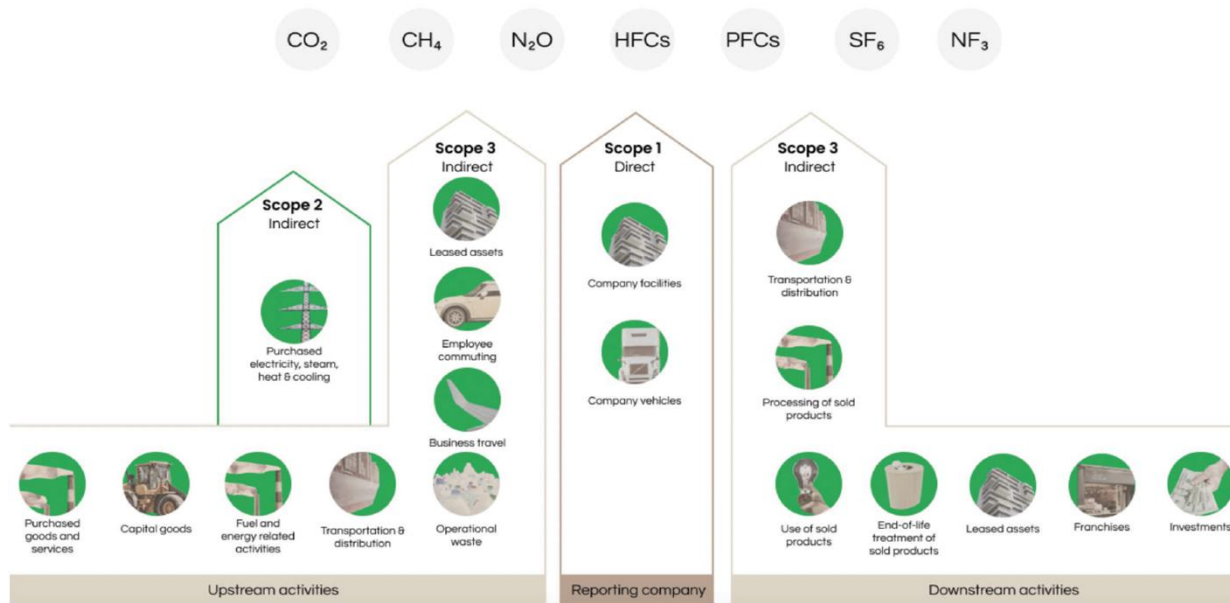
- 4 Heat pumps for heating and cooling.
- Climate ceilings in offices.
- LED lightning in the entire building.
- Charging stations for 12 electric vehicles.

Innovative



CARBON FOOTPRINT ASSESMENT

In 2022 a Carbon Footprint Assessment within scope 1 and 2 categories was conducted by third party Nexio projects.



Overview of GHG Protocol scopes and emissions across the value chain (Original source: GHG Protocol, redrawn by Nexio Projects)

OUTCOME OF THE CARBON FOOTPRINT ASSESSMENT

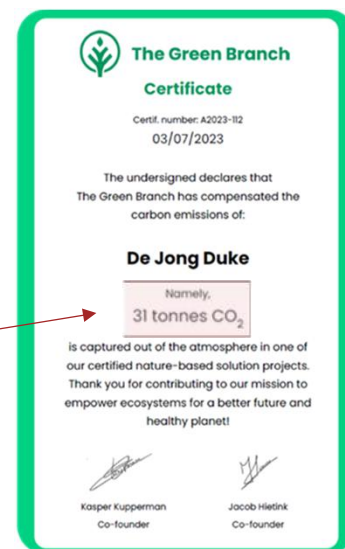
GRI Disclosure	Description	Quantity	Unit
302 - 1	Total energy from fuel consumption	295	Gj
	Diesel	151	Gj
	Petrol	144	Gj
	Total energy from electricity consumption	2.215	Gj
	Total Energy Consumption	2.510	GJ
305 - 1	Scope 1 Direct GHG Emissions	19	tCO2e
305 - 2	Scope 2 Indirect GHG Emissions	11	tCO2e
305 - 4	Emissions per employee	0,3	tCO2e

Disclosures according to GRI reporting standards

CO2 COMPENSATION

GRI Disclosure	Description	Quantity	Unit
302 - 1	Total energy from fuel consumption	295	Gj
	Diesel	151	Gj
	Petrol	144	Gj
	Total energy from electricity consumption	2.215	Gj
	Total Energy Consumption	2.510	GJ
305 - 1	Scope 1 Direct GHG Emissions	19	tCO2e
305 - 2	Scope 2 Indirect GHG Emissions	11	tCO2e
305 - 4	Emissions per employee	0,3	tCO2e

Disclosures according to GRI reporting standards



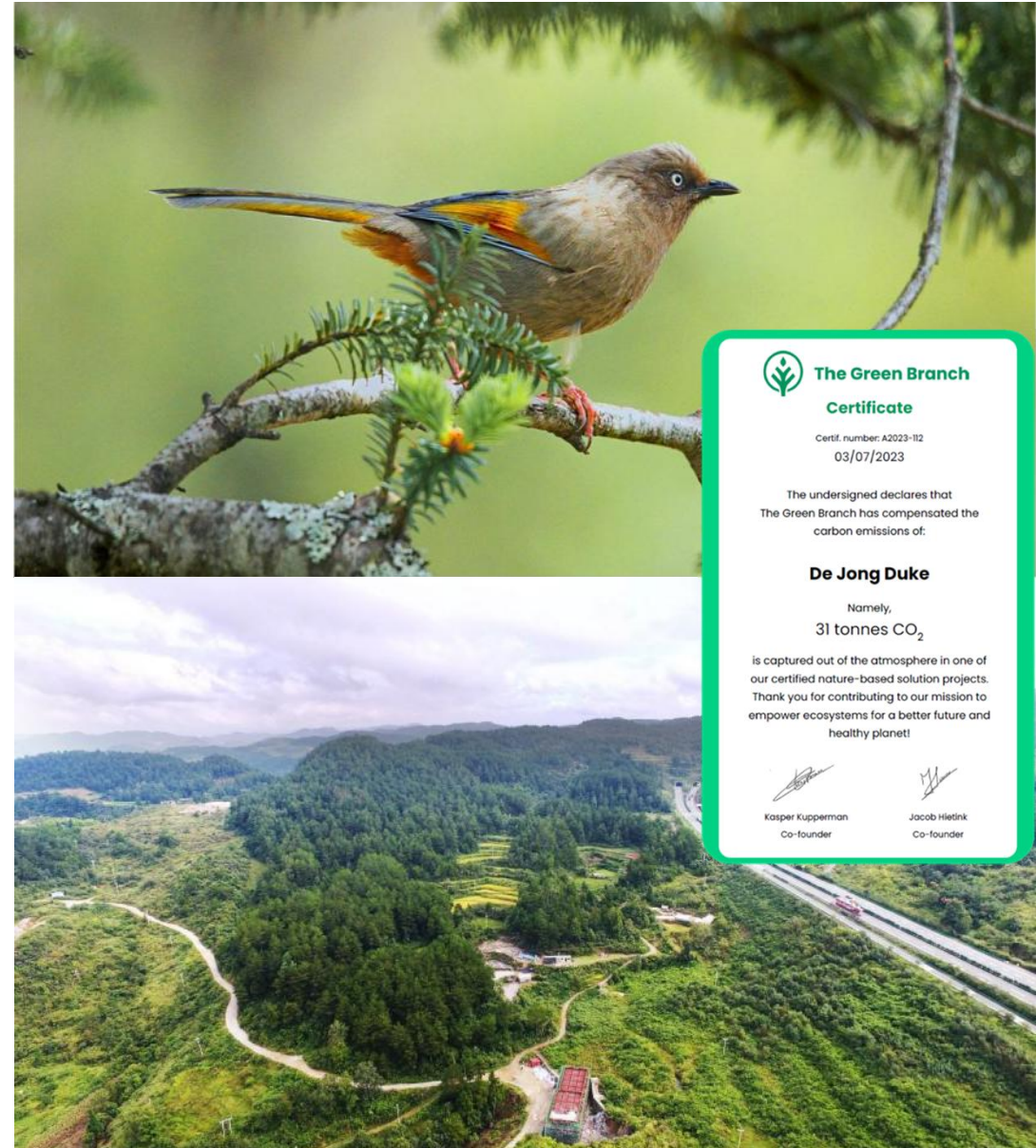
During wintertime and at night, our solar panels don't supply enough energy. As there is no good sustainable and cost-effective solution for energy storage for us yet, this means that we feed the surplus energy back to the energy grid and take power from the energy grid at nights and in winter.



CO2 COMPENSATION

The energy that we need during nights and winter we compensate through a reforestation project.

We invest in reforestation projects in China, supporting the restoration of 50,000 hectares of degraded land through a project of the Greenbranch.



REFORESTATION CHINA

LOCATION: **Guizhou, China**

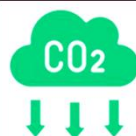
PROJECT TYPE: **Afforestation, Reforestation and Revegetation (ARR)**

REGISTRY: **Verra**

STANDARD: **VCS, CCB**



IMPACT (SDGs): **1, 4, 5, 8, 13, 15**



731.897 tCO₂
carbon removal per year



50.061 hectare
reforestation

>70.000
soccer fields!



16.339 jobs
for local
villagers



2.790 trees
planted per hectare

WE DO MORE

Stewardship

As sustainability is part of our core values. We have
more sustainable initiatives

ECOVADIS BRONZE



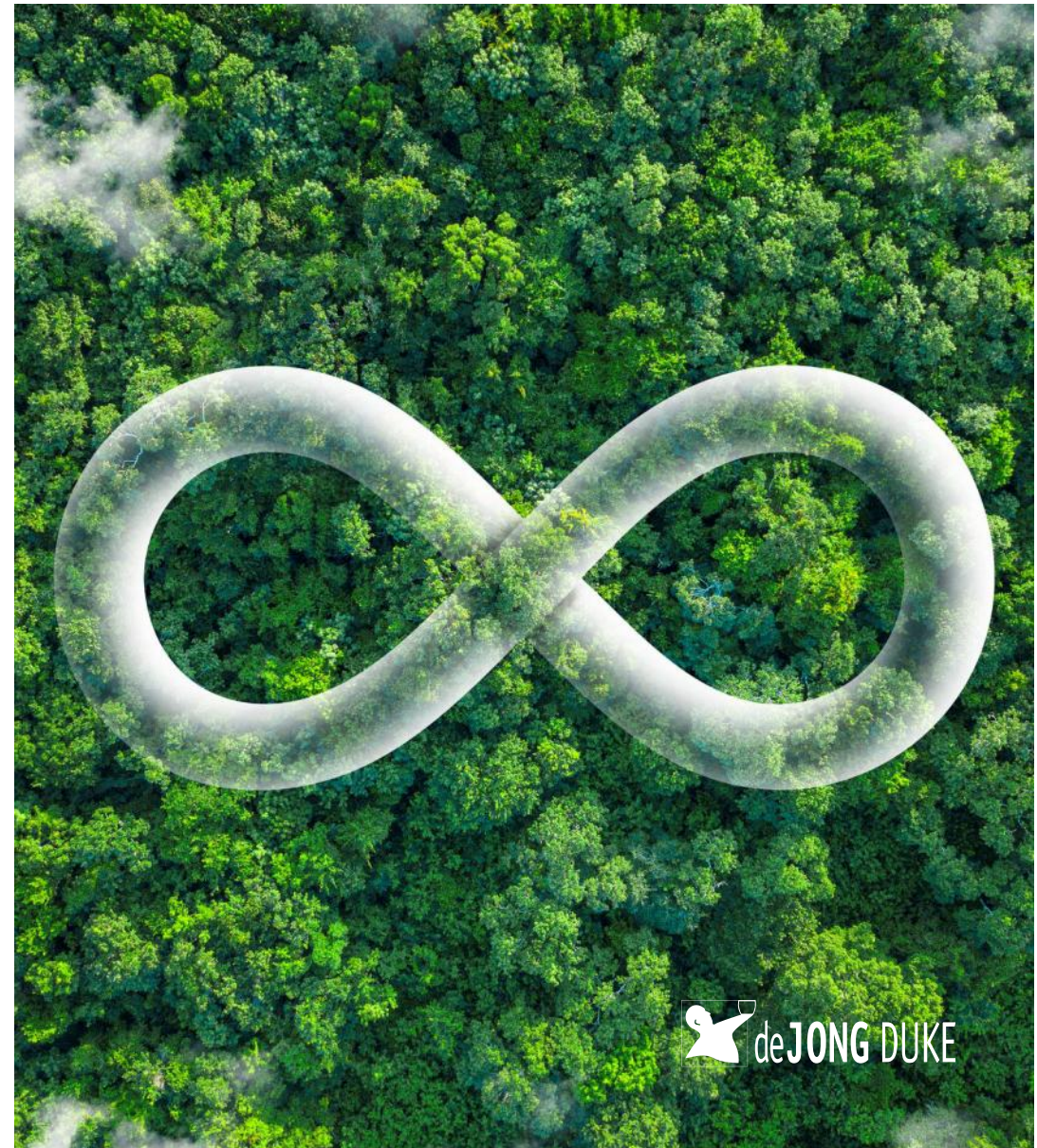
EcoVadis is an international sustainability rating agency and marketplace.

EcoVadis rates businesses' sustainability based on four key categories:

- Environmental impact.
- Labor & human rights standards.
- Ethics.
- Procurement practices.

CIRCULAR DESIGN

Our equipment is designed in line with our ACT2 circular guidelines to be energy efficient and using sustainable materials. Machines are easy to repair, refurbish, and recycle, reducing environmental impact throughout their lifecycle.

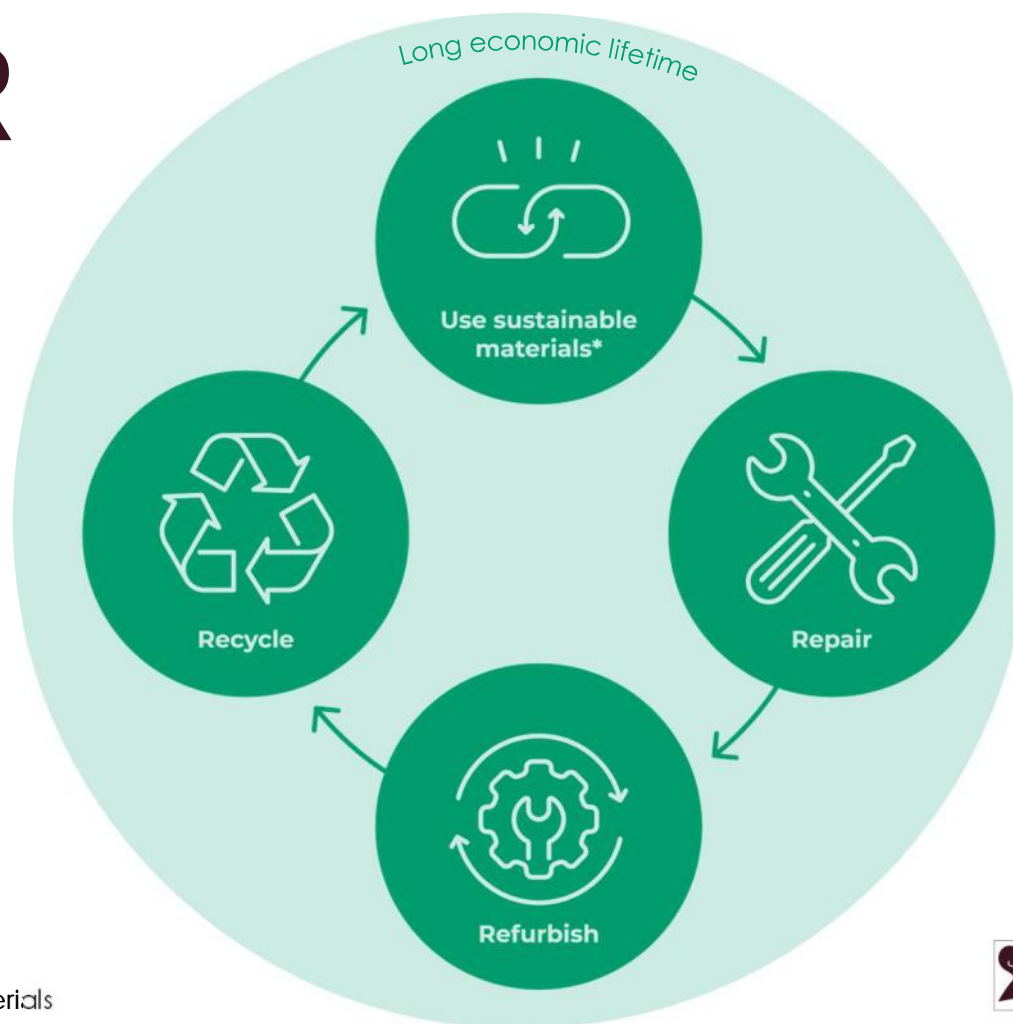


CIRCULAR DESIGN

We believe that the materials used in our equipment should become part of an everlasting material cycle. Machines are developed to have a long economic lifetime.

Based upon the Butterfly diagram
(Ellen MacArthur foundation)

*durable high quality and partly recycled materials



CONNECTME

Energy saving

Adaptive energy saving mode

save up to 30% of energy through an adaptive energy saving mode, on top of the regular pre-programmed energy-saving setting.

Efficient routing & remote service





BUZZING WITH INSECTS

Near our office in Sliedrecht we have a garden with native flowers. Attracting all kinds of insects, butterflies, birds and other animals.



“We are in it for the
long run”

Anno 1897 -

